



Basic / Advanced / Expert

Application note

spaceLYnk upgrade procedure

Compatibility of Firmware and Project, Import/Export of graphic parts and Firmware upgrade process



Safety Information

Important Information

Read these instructions carefully before trying to install, configure, or operate this software. The following special messages may appear throughout this bulletin or on the equipment to warn of potential hazards or to call attention to information that clarifies or simplifies a procedure.



The addition of either symbol to a “Danger” or “Warning” safety label indicates that an electrical hazard exists which will result in personal injury if the instructions are not followed.



This is the safety alert symbol. It is used to alert you to potential personal injury hazards. Obey all safety messages that follow this symbol to avoid possible injury or death.

DANGER

DANGER indicates an imminently hazardous situation which, if not avoided, will result in death or serious injury.

WARNING

WARNING indicates a potentially hazardous situation which, if not avoided, can result in death or serious injury.

CAUTION

CAUTION indicates a potentially hazardous situation which, if not avoided, can result in minor or moderate injury.

NOTICE

NOTICE is used to address practices not related to physical injury. The safety alert symbol shall not be used with this signal word.

Please Note

Electrical equipment should be installed, operated, serviced, and maintained only by qualified personnel. No responsibility is assumed by Schneider Electric for any consequences arising out of the use of this material.

A qualified person is one who has skills and knowledge related to the construction, installation, and operation of electrical equipment and has received safety training to recognize and avoid the hazards involved.

Safety Precautions

⚠ WARNING
<p>HAZARD OF INCORRECT INFORMATION</p> <ul style="list-style-type: none">• Do not incorrectly configure the software, as this can lead to incorrect reports and/or data results.• Do not base your maintenance or service actions solely on messages and information displayed by the software.• Do not rely solely on software messages and reports to determine if the system is functioning correctly or meeting all applicable standards and requirements.• Consider the implications of unanticipated transmission delays or failures of communications links. <p>Failure to follow these instructions can result in death, serious injury, or equipment damage.</p>

The information provided in this documentation contains general descriptions and/or technical characteristics of the performance of the products contained herein. This documentation is not intended as a substitute for and is not to be used for determining suitability or reliability of these products for specific user applications. It is the duty of any such user or integrator to perform the appropriate and complete risk analysis, evaluation and testing of the products with respect to the relevant specific application or use thereof. Neither Schneider Electric nor any of its affiliates or subsidiaries shall be responsible or liable for misuse of the information that is contained herein. If you have any suggestions for improvements or amendments or have found errors in this publication, please notify us.

No part of this document may be reproduced in any form or by any means, electronic or mechanical, including photocopying, without express written permission of Schneider Electric.

All pertinent state, regional, and local safety regulations must be observed when installing and using this product. For reasons of safety and to help ensure compliance with documented system data, only the manufacturer should perform repairs to components.

When devices are used for applications with technical safety requirements, the relevant instructions must be followed.

Failure to use Schneider Electric software or approved software with our hardware products may result in injury, harm, or improper operating results.

Failure to observe this information can result in injury or equipment damage.

© 2014 Schneider Electric. All rights reserved

Table of Contents

1	Introduction	6
2	Firmware compatibility table	7
3	New SE SVG icons	8
3.1	New SE SVG icons in version 1.1.0.....	8
3.2	How to obtain SVG icons after upgrade to 1.1.0 without preserving project.....	8
3.3	How to obtain SVG icons after upgrade to 1.1.0 preserving project.....	8
3.4	New SE SVG icons since v1.1.1.....	8
4	Overview of import/export options	9
5	Firmware upgrade	10
5.1	Firmware upgrade step-by-step.....	10
5.2	Video manual for firmware upgrade.....	11
6	Import/Export of graphical parts	12
6.1	Export of graphic parts	12
6.2	Import of graphic parts.....	13
6.3	Red frames around icons	14
7	Appendix	15
7.1	Glossary.....	15

1 Introduction

This application note describes compatibility of projects, firmware itself and one chapter which describes how to obtain new SVG Schneider Electric icons.

A glossary is available in the appendix chapter of this document. Please refer to it whenever necessary.

Competencies

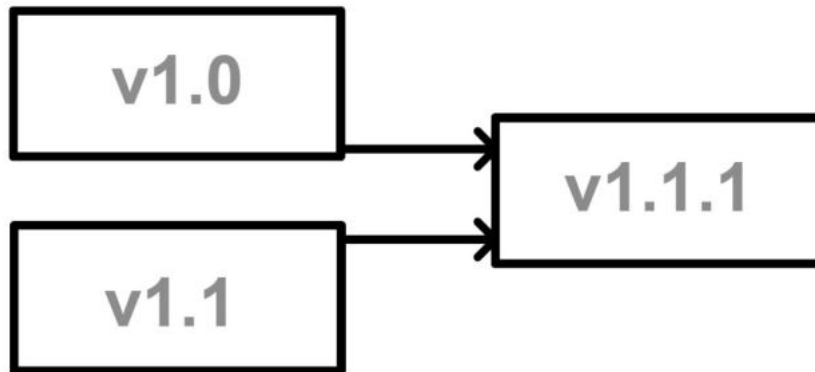
This document is intended for readers who have been trained on homeLYnk, spaceLYnk products. The integration should not be attempted by someone who is new to the installation of either product. In addition we recommend that you be familiar with user guide.

System prerequisites

Software	Version	Download
spaceLYnk	1.1.1	http://www.schneider-electric.com

Table 1: software versions of used software

2 Firmware compatibility table



Process	Description
v1.0 -> v1.1.1	spaceLYnk does not delete project during firmware upgrade (we strongly recommend backup spaceLYnk every time in case of power interruptions) Custom blocks function was not present on this version.
v1.1 -> v1.1.1	spaceLYnk does not delete project during firmware upgrade (we strongly recommend backup spaceLYnk every time in case of power interruptions) Custom blocks are not preserved during firmware upgrade of spaceLYnk. Please use fix package "FIX_Preserve_blocks_during_FW_upgrade_for_sl_1.1.0_hl_1.3.0" which should be installed before FW upgrade to higher version. Fix package can be installed via Install updates in Configurator -> Utilities.

Warning:

- Restoration of project in older firmware version, than it was created is not supported!
- Downgrade of FW is not supported!

3 New SE SVG icons

Firmware v1.1 contains new graphical Schneider Electric icons. Big advantage of these icons is their format – SVG. SVG icons are fully scalable without any impact to quality of icon. For more details about SVG format please see AN006.

3.1 New SE SVG icons in version 1.1.0

These icons are fully available in devices with factory pre-loaded 1.1.0 firmware.

Warning: Restoration of project will overwrite all existing graphics. Graphics is part of the project backup.

3.2 How to obtain SVG icons after upgrade to 1.1.0 without preserving project

If you want to see new svg icons after FW upgrade to v1.1.0, please carry out factory reset.

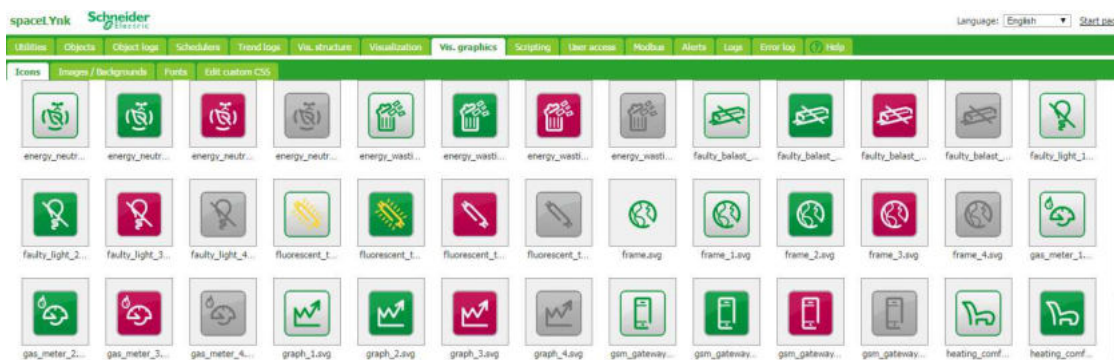
Warning: Factory reset will erase your project!

3.3 How to obtain SVG icons after upgrade to 1.1.0 preserving project

Package with new icons can be downloaded from <http://www.schneider-electric.com/>. Please observe Documents and Downloads tab related to spaceLYnk. This package can be safely uploaded and used in existing project.

3.4 New SE SVG icons since v1.1.1

- Schneider Electric SVG icons are uploaded to the device every time during FW upgrade process.
- Origin graphics in the project is preserved. SVG icons will join to existing graphics.
- New icons with the same name as existing icons will be ignored during upload.



4 Overview of import/export options

This table describes possibilities of import/export in the system.

Function	Note	v1.0	v1.1
Complete Project	Export/Import of whole project	✓	✓
Object logs	Export of all object logs		✓
Trends	Export Day/Month/Year data	✓	✓
Levels/Plans	Whole visualization or only part can be Exported/Imported		✓
Layouts/Widgets	Whole layouts or widgets can be Exported/Imported		✓
Fonts	Custom fonts can be Imported		✓
Scripts	All scripts can be Imported/Exported	✓	✓
User libraries	User libraries can be Imported/Exported	✓	✓
Script helpers	Script helpers can be Imported/Exported	✓	✓
Modbus profiles	Modbus profiles can be Imported		✓

5 Firmware upgrade

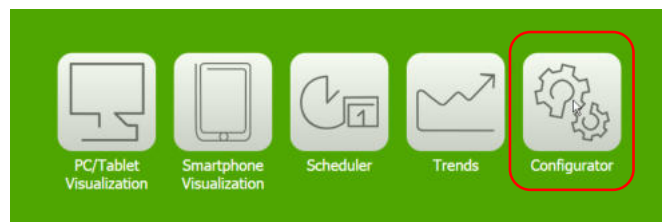
5.1 Firmware upgrade step-by-step

Firmware consists of three steps:

- 1) Open Configurator
- 2) Upgrade firmware
- 3) Clean web browser cache

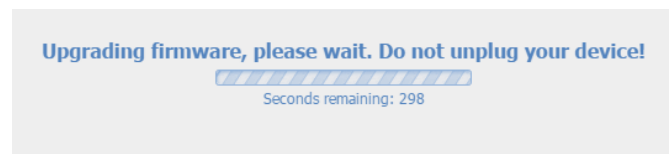
Step 1: Open Configurator

- a) Open your web browser
- b) Connect to device – fill IP address
- c) Click to Configurator icon



Step 2: Upgrade firmware

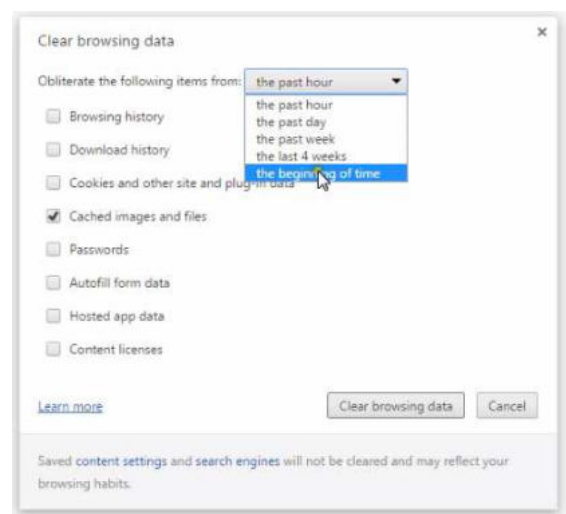
- a) Click to System icon
- b) Open System tab
- c) Choose Firmware upgrade
- d) Choose already downloaded firmware file
- e) Wait 5 minutes
- f) Return to the Start page – insert IP address of spaceLYnk as URL



Step 3: Clean web browser cache

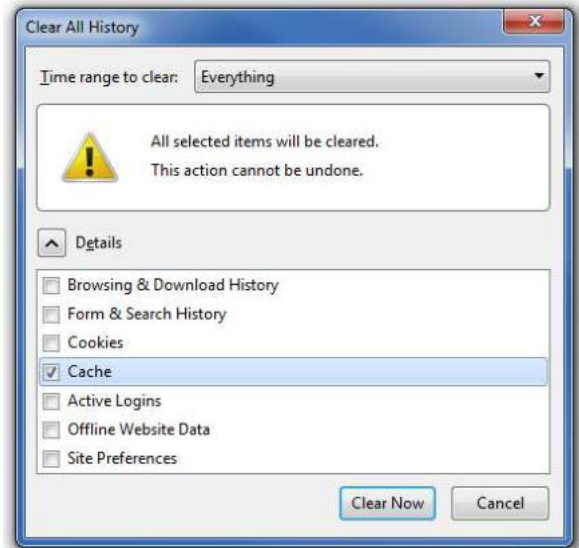
Chrome:

- a) Click to Customize and control Google Chrome icon on top right corner of browser and open History
- b) Click to Clear browsing data
 - **Shortcut: CTRL + Shift + Delete**
- c) Tick only Cached images and files box
- d) Choose clear cache since “The beginning of time”
- e) Press Clear browsing data



Firefox:

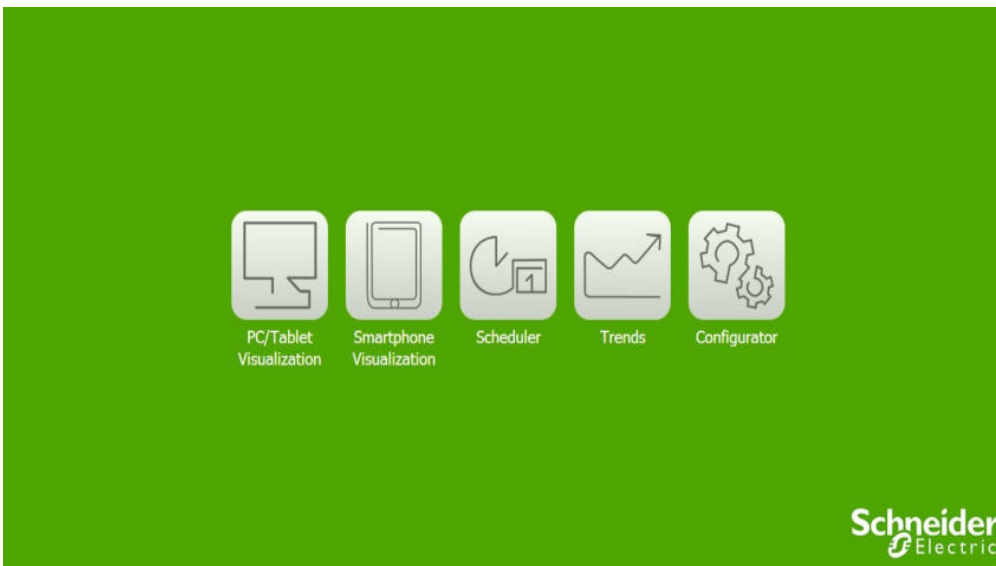
- a) Click to Open menu icon on top right corner of the browser
- b) Open History and choose Clear recent history
 - Shortcut: **CTRL+SHIFT+DEL**
- c) Tick only Cache box
- d) Choose Time range to clear "Everything"



Device is now prepared with upgraded-actual software.

5.2 Video manual for firmware upgrade

Click the picture to start tutorial video



6 Import/Export of graphical parts

This feature is available in software version 1.1 and up. Whole visualization, selected levels, layouts, widget and plans can be exported or imported. This feature also contains possibility to import part of graphics with or without linked objects / group addresses.

6.1 Export of graphic parts

Export of graphics consists of two steps:

- 1) Open Vis. Structure – Levels/Plans
- 2) Choose part of graphics for export

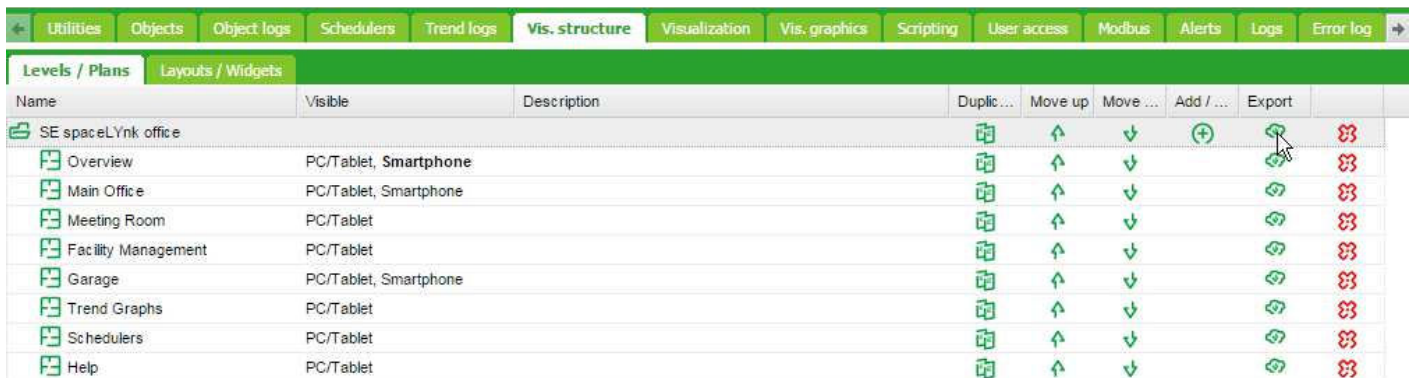
Note: In this case we will export main level. Process for export widget or layout is identical.

Step 1: Open Vis. Structure – Levels/Plans

- a) Click to Vis. Structure tab
- b) Open Levels / Plans

Step 2: Choose part of graphic for export

- a) Choose part of visualization and press export icon in “**Export**” column



Name	Visible	Description	Duplic...	Move up	Move ...	Add / ...	Export	
SE spaceLYnk office								
Overview	PC/Tablet, Smartphone							
Main Office	PC/Tablet, Smartphone							
Meeting Room	PC/Tablet							
Facility Management	PC/Tablet							
Garage	PC/Tablet, Smartphone							
Trend Graphs	PC/Tablet							
Schedulers	PC/Tablet							
Help	PC/Tablet							

Export of graphic is now created.

6.2 Import of graphic parts

Export of graphics consists of two steps:

- 1) Open Vis. Structure – Levels/Plans
- 2) Choose proper place for import and click import

Note: In this case we will import main level. Process for import widget or layout is identical.

Step 1: Open Vis. Structure – Levels/Plans

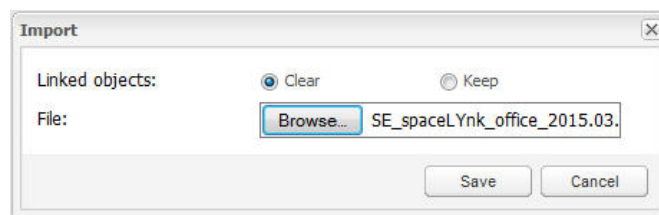
- a) Click to Vis. Structure tab
- b) Open Levels / Plans

Step 2: Choose proper place for import and click import

- a) Choose proper place for import of graphics – more in table below
- b) Click to import and choose relevant graphical part
- c) There is possibility to choose if linked objects should be preserved or not

Graphic	Proper place
Level	Import button on left bottom in Levels/Plans
Second level	Import button in Add/Import column next to Level
Plan	Import button in Add/Import column next to Level or Second level
Widget	Import button in Add/Import column next to Widgets
Layout	Import button in Add/Import column next to Layouts

Trouble shooting: If you have red frames around objects in graphics please proceed to next chapter “What actually mean icons in red frames”?



Graphical parts are now imported.

6.3 Red frames around icons

After import you can experience red frames around objects. Red frame means, that objects do not have assigned KNX group address (Or another association). Choose relevant object from the list of objects, for frame to disappear.

The screenshot displays the homeYnk Schneider Electric software interface. The main window shows a 3D perspective view of an office layout titled "Main Office". Various icons representing different objects (light bulbs, monitors, etc.) are placed on the desk surfaces. Several of these icons are surrounded by red rectangular frames, indicating they are not yet associated with a KNX group address. On the right side, a "Plan editor" panel is open, showing configuration options for a selected object. The "Data object" dropdown menu is highlighted with a red border and a red exclamation mark icon, with a tooltip that reads "This field is required". Other configuration options include "Custom name" (Temperature graph), "Icon" (empty.svg), "Window size" (320 x 240), "Number of points" (10), "Auto open window" (unchecked), "Hide background" (checked), and "Additional classes". At the bottom of the interface, the status bar shows "Version: 1.3.0" and "CPU/IO: 0.23 0.16 0.20, Memory: 8%, KNX/TP: OK".

7 Appendix

7.1 Glossary

The following table describes the acronyms and defines the specific terms used in this document.

Abbreviation	Description
SE	Schneider Electric
SVG	Scalable Vector Graphics (SVG) is an XML-based vector image format for two-dimensional graphics
XML	Extensible Markup Language (XML) is a markup language that defines a set of rules for encoding documents in a format which is both human-readable and machine-readable
URL	Uniform Resource Locator (URL) is a reference to a resource that specifies the location of the resource on a computer network and a mechanism for retrieving it

Table 2: specific terms

Schneider Electric Industries SAS

Head Office

35, rue Joseph Monier

92506 Rueil-Malmaison Cedex

FRANCE

www.schneider-electric.com