

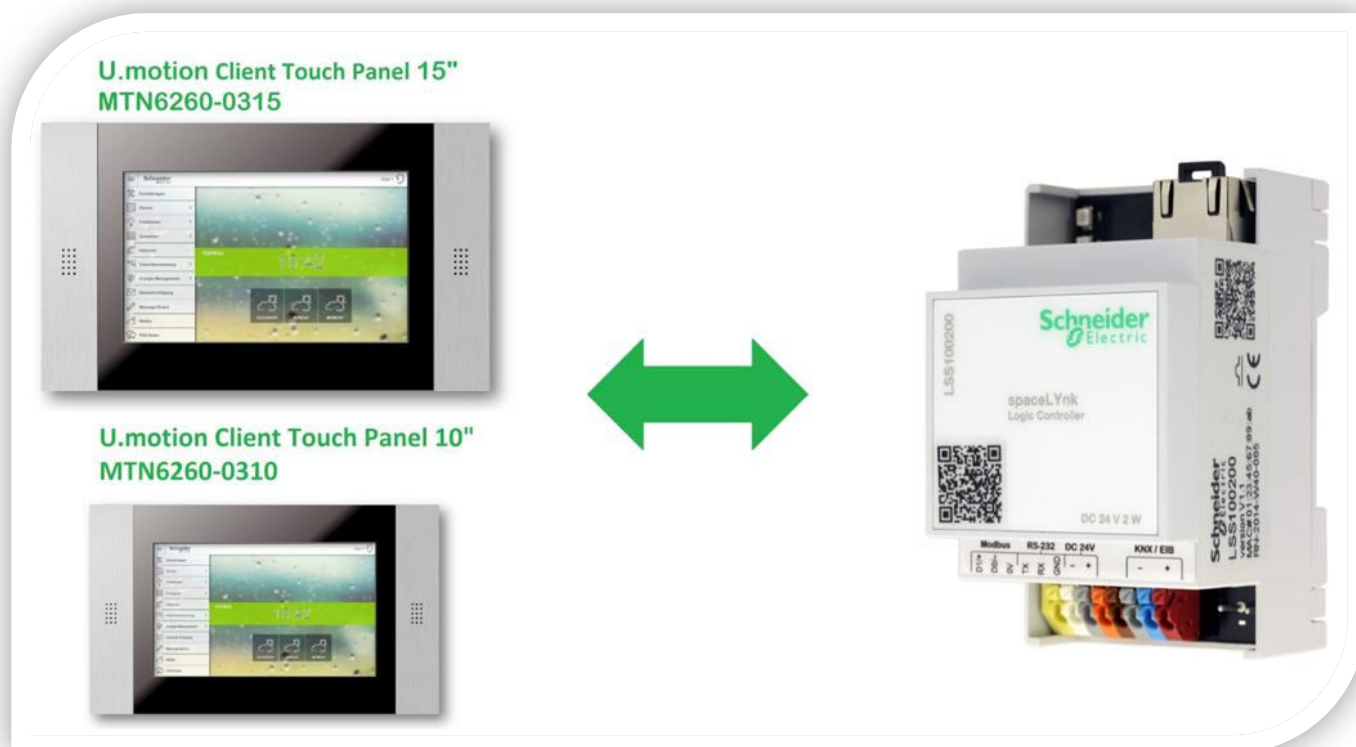


Basic / Advanced / Expert

Application note

U.motion Client Touch Panels 10" and 15"

U.motion Client Touch Panels 10" and 15" with spaceLYnk



Safety Information

Important Information



Read these instructions carefully before trying to install, configure, or operate this software. The following special messages may appear throughout this bulletin or on the equipment to warn of potential hazards or to call attention to information that clarifies or simplifies a procedure.

The addition of either symbol to a “Danger” or “Warning” safety label indicates that an electrical hazard exists which will result in personal injury if the instructions are not followed.



This is the safety alert symbol. It is used to alert you to potential personal injury hazards. Obey all safety messages that follow this symbol to avoid possible injury or death.

DANGER

DANGER indicates an imminently hazardous situation which, if not avoided, will result in death or serious injury.

WARNING

WARNING indicates a potentially hazardous situation which, if not avoided, can result in death or serious injury.

CAUTION

CAUTION indicates a potentially hazardous situation which, if not avoided, can result in minor or moderate injury.

NOTICE


NOTICE is used to address practices not related to physical injury. The safety alert symbol shall not be used with this signal word.

Please Note

Electrical equipment should be installed, operated, serviced, and maintained only by qualified personnel. No responsibility is assumed by Schneider Electric for any consequences arising out of the use of this material.

A qualified person is one who has skills and knowledge related to the construction, installation, and operation of electrical equipment and has received safety training to recognize and avoid the hazards involved.

Safety Precautions

|  WARNING |
|--|
| <p>HAZARD OF INCORRECT INFORMATION</p> <ul style="list-style-type: none">• Do not incorrectly configure the software, as this can lead to incorrect reports and/or data results.• Do not base your maintenance or service actions solely on messages and information displayed by the software.• Do not rely solely on software messages and reports to determine if the system is functioning correctly or meeting all applicable standards and requirements.• Consider the implications of unanticipated transmission delays or failures of communications links. <p>Failure to follow these instructions can result in death, serious injury, or equipment damage.</p> |

The information provided in this documentation contains general descriptions and/or technical characteristics of the performance of the products contained herein. This documentation is not intended as a substitute for and is not to be used for determining suitability or reliability of these products for specific user applications. It is the duty of any such user or integrator to perform the appropriate and complete risk analysis, evaluation and testing of the products with respect to the relevant specific application or use thereof. Neither Schneider Electric nor any of its affiliates or subsidiaries shall be responsible or liable for misuse of the information that is contained herein. If you have any suggestions for improvements or amendments or have found errors in this publication, please notify us.

No part of this document may be reproduced in any form or by any means, electronic or mechanical, including photocopying, without express written permission of Schneider Electric.

All pertinent state, regional, and local safety regulations must be observed when installing and using this product. For reasons of safety and to help ensure compliance with documented system data, only the manufacturer should perform repairs to components.

When devices are used for applications with technical safety requirements, the relevant instructions must be followed.

Failure to use Schneider Electric software or approved software with our hardware products may result in injury, harm, or improper operating results.

Failure to observe this information can result in injury or equipment damage.

© 2014 Schneider Electric. All rights reserved

Table of Contents

- 1 Introduction 6**
- 2 SW upgrade 8**
 - 2.1 Upgrade of spaceLYnk 8
 - 2.2 Upgrade of U.motion Touch Panel 10” and 15” 8
- 3 Tips and tricks 10**
 - 3.1 Tips and tricks for spaceLYnk visualization 10
 - 3.1.1 Schedulers and trends 10
 - 3.1.2 How to modify a CSS for hide cursor 11
 - 3.2 Tips and tricks for U.motion setup 12
 - 3.2.1 U.motion Main page 12
 - 3.2.2 More Touch Panels connected to one spaceLYnk 13
- 4 Setup of devices 14**
 - 4.1 Setup of spaceLYnk 14
 - 4.2 Setup of U.motion Touch Panel 10” and 15” 14
 - 4.3 Troubleshooting 16
- 5 Video manual 17**
- 6 Appendix 18**
 - 6.1 Glossary 18



1 Introduction

This application note describes the interoperability of U.motion Client Touch 10" and 15" with spaceLYnk. U.motion Client Touch is a client touch panel for the supervision and visualization of home & building automation systems, which have been realized on the basis of the worldwide KNX standard and spaceLYnk. U.motion Client Touch connects itself via network with a spaceLYnk and represents its graphical contents. The configuration and control of the U.motion Client Touch can be done locally on the device or remotely through its web interface, which can be displayed within a common browser (from each supported device / operating system). This chapter describes the configuration of U.motion Client Touch, in order to make it work correctly with a spaceLYnk.

Touch Panel

- Reliable wired connection
- One, easy to find location for control of your house/building
- Unified visualization design from Smart phone to Touch Panel.
- Make the energy savings visible
- Scalable to your needs 10" or 15" screen

spaceLYnk




- Logic controller
- Gateway (KNX, ModBus, BACnet)
- Visualization via web server
- Easy to implement any client needs
- Customizable visualization

Competencies

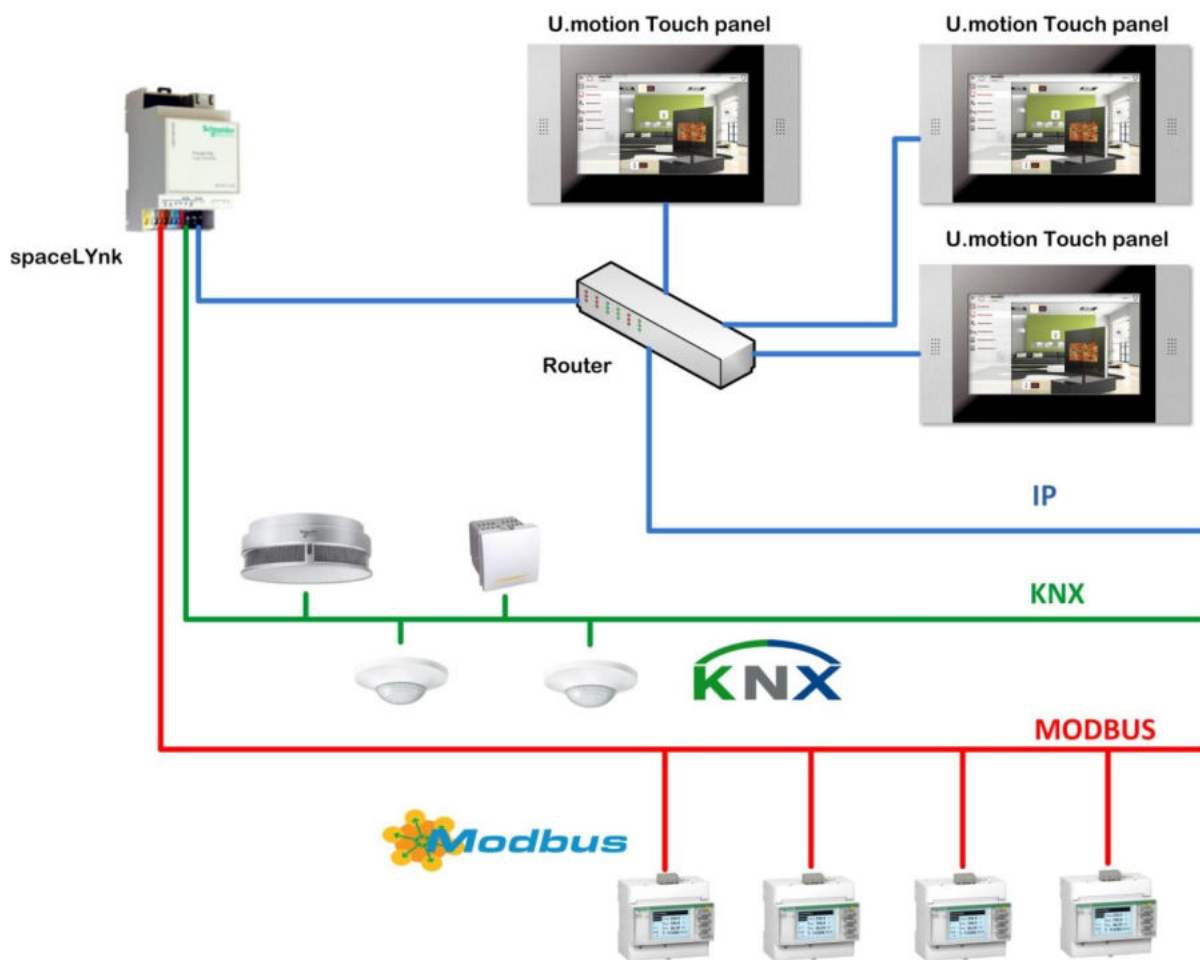
This document is intended for readers who have been trained on homeLYnk, spaceLYnk, U.motion products. The integration should not be attempted by someone who is new to the installation of either product. In addition we recommend that you be familiar with user guides.

A glossary is available in the appendix chapter of this document. Please refer to it whenever necessary.

System prerequisites

| Product | Art. no. | SW Version | Download |
|---------------------------|--------------|--------------------|---|
| spaceLYnk | LSS100200 | 1.1.0 | http://www.schneider-electric.com  |
| U.motion Client Touch 15" | MTN6260-0315 | 1.1.1 | http://www.schneider-electric.com/umotion  |
| U.motion Client Touch 10" | MTN6260-0310 | Identical with 15" | http://www.schneider-electric.com/umotion  |

Topology



2 SW upgrade

We recommend firmware upgrade in all devices to avoid any operational issues.

2.1 Upgrade of spaceLYnk

For spaceLYnk upgrade we recommend to read the [AN028_spaceLYnk_upgrade_procedure](#) – spaceLYnk upgrade procedure.

Note: Please consider possible backward compatibility issues.



2.2 Upgrade of U.motion Touch Panel 10” and 15”

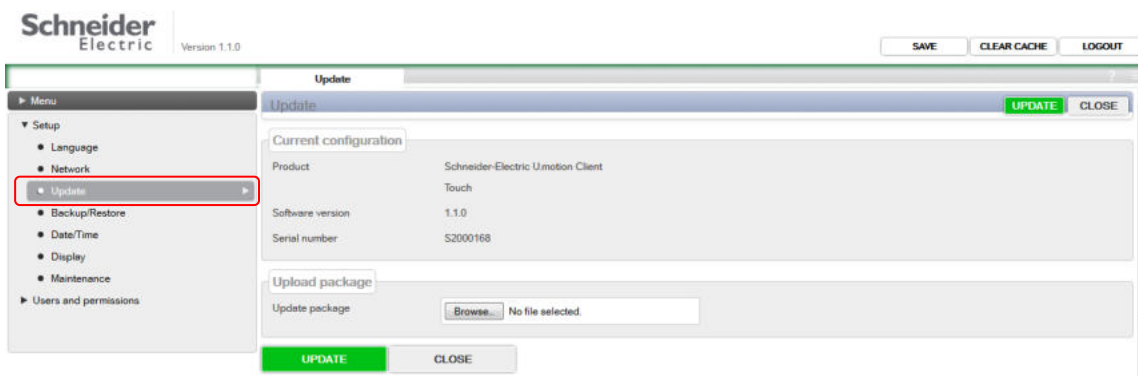
The update process runs completely automatically; please wait for feedback from the page without performing other tasks or exiting the browser (risk of data loss / malfunction). Depending on the configuration and software version, the update may take several minutes.

Firmware consists of two steps:

- 1) Open Update menu
- 2) Upgrade firmware

Step 1: Open Update menu

- a) Open your web browser
- b) Connect to device, fill device's IP address (Default IP: 192.168.0.130)
- c) Login to Configuration menu (Default login: admin, Default password: admin)
- d) Click to **Setup**
- e) Click to **Update**



Step 2: Upgrade firmware

- a) Click to **Browse** button
- b) Choose relevant U.motion FW file
- c) Click to **UPDATE** button
- d) Wait until Update – Summary will be shown
- e) Click to **REBOOT NOW**
- f) Wait until Touch Panel get rebooted – It can take up to 5 minutes
- g) Refresh U.motion webpage (**Press F5**)



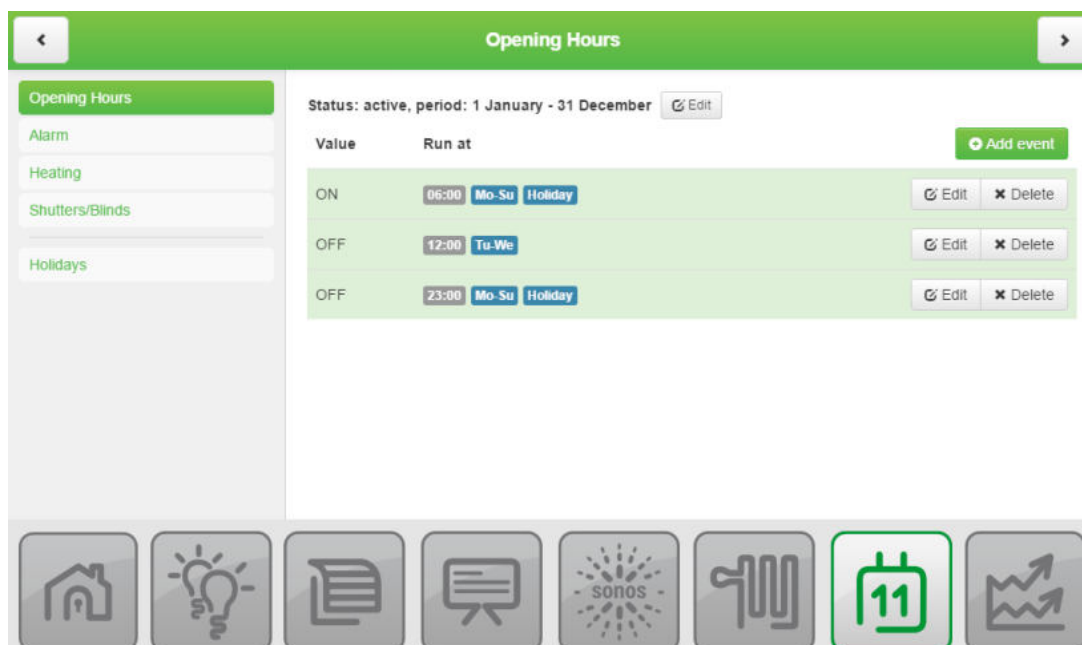
Device is now prepared with upgraded-actual software.

3 Tips and tricks

3.1 Tips and tricks for spaceLYnk visualization

3.1.1 Schedulers and trends

Because schedulers and trends are available from **Start page** by default we recommend to create them in frames. This workaround will eliminate unpractical leaving from PC/Tablet visualization page. It is not very comfortable to leave the visualization via keyboard or via holding your finger on screen and then pressing **back** from pop up dialogue window.



3.1.2 How to modify CSS to hide mouse cursor

If you don't want to display mouse cursor on your U.motion Touch Panels, then modify CSS in spaceLYnk. Choose the CSS code from below depending on size of your Client Touch Panel.

Warning: Modification also affects PCs and other devices, which has the same screen resolution as defined in CSS code below.

U.motion Client Touch 10"

```
/*hide cursor on U.Motion 10 inch panel*/
@media screen and (device-width: 1024px) and (device-height: 600px) {
  html, body, iframe, div, span, object, form, input, h1, h2, button, label, a, img {
    cursor: none !important;
  }
}
```

U.motion Client Touch 15"

```
/*hide cursor on U.Motion 15 inch panel*/
@media screen and (device-width: 1366px) and (device-height: 768px) {
  html, body, iframe, div, span, object, form, input, h1, h2, button, label, a, img {
    cursor: none !important;
  }
}
```

You can also set a range where the CSS rules are valid

This may be helpful, if you want to hide mouse cursor in more devices with various screen resolution.

```
/*hide cursor on U.Motion 10 inch panel and 15 inch panel (and all panels with sizes in
between) */
@media screen and (min-device-width: 1024px) and (max-device-width: 1366px) and (min-device-
height: 600px) and (max-device-height: 768px) {
  html, body, iframe, div, span, object, form, input, h1, h2, button, label, a, img {
    cursor: none !important;
  }
}
```

3.2 Tips and tricks for U.motion setup

3.2.1 U.motion Main page

Umotion can start on spaceLYnk's *Start page*, *Trends*, *Scheduler*, *Visualization* or on some specific plan.

1. Initial page: *Start page*

- **How to:** <http://{{spaceLYnk IP}}/>
- **Example:** <http://10.154.20.81/>

If Touch Panel starts on *Start page*, then icons as *PC/Tablet Visu*, *Trend* and *Scheduler* can be selected. If you have active password access you need hardware keyboard to access *Visu*, *Trends* etc. If you want to go back from



Visu, *Trends* etc. to *Start page*, you have to hold finger on one place until context menu appears and then press **Back**. This can be solved by integration of Schedulers and Trends into Visualization, for more information see chapter 3.1.1.

2. Initial page: Visualization, Trends etc.

- **How to:** <http://{{user:password@spaceLYnk IP}}/cgi-bin/scada-vis/index.cgi>
- **Example:** <http://admin:admin@10.154.20.81/cgi-bin/scada-vis/index.cgi>

In this case the Touch Panel starts directly on the first page of Visualization.

In Umotion setting use actual login/password registered in spaceLYnk.

If you are not using password access in spaceLYnk, then login information can be removed from link – also @ symbol.

URL for PC/Tablet Visualization: <http://{{user:password@spaceLYnk IP}}/cgi-bin/scada-vis/index.cgi>

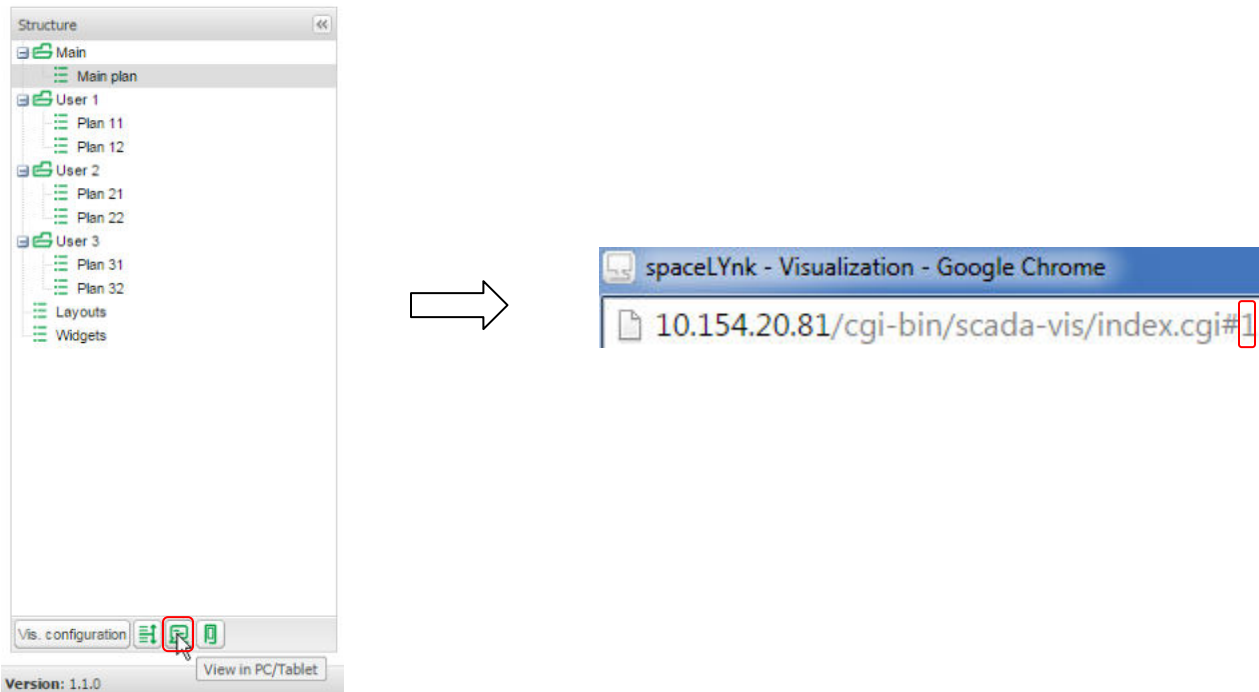
URL for Trends: <http://{{user:password@spaceLYnk IP}}/cgi-bin/scada-vis/trends.cgi>

URL for Schedulers: <http://{{user:password@spaceLYnk IP}}/cgi-bin/scada-vis/schedulers.cgi>

3. Initial page: Specific plan

- **How to:** `http://{user:password@spaceLYnk IP /cgi-bin/scada-vis/index.cgi#n}`
- **Example:** `http://admin:admin@10.154.20.81/cgi-bin/scada-vis/index.cgi#1`

Specific plan number can be seen when you open spaceLYnk configuration – Visualization tab – Choose plan which you want to display like main page in U.motion and click **View in PC/Tablet**. At the end of URL you will find desired number of plan – see picture below (In pop up window with Visualization).



3.2.2 More Touch Panels connected to one spaceLYnk

On one spaceLYnk can be simultaneously connected to more than one Touch Panel. Take into consideration CPU load – if you are using spaceLYnk like gateway or running a lot of scripts on it, then less users can be connected at one time.

For U.motion Touch Panels we recommend less than three Touch Panels connected at one time. Good optimization of the system is required! For topology see picture “**Topology**” in 1st chapter.

Use case of several Touch Panels in one building - Reception, facility office and employee’s office.

4 Setup of devices

For setup of both devices we recommend to use Google Chrome web browser. Can be downloaded here:

<https://www.google.com/chrome/browser/desktop/index.html>

Warning: Be aware that to one Touch Panel can be logged only one user!

4.1 Setup of spaceLYnk

spaceLYnk doesn't need any special configuration for interoperability with U.motion touch panels. Prepare standard PC/Tablet visualization.

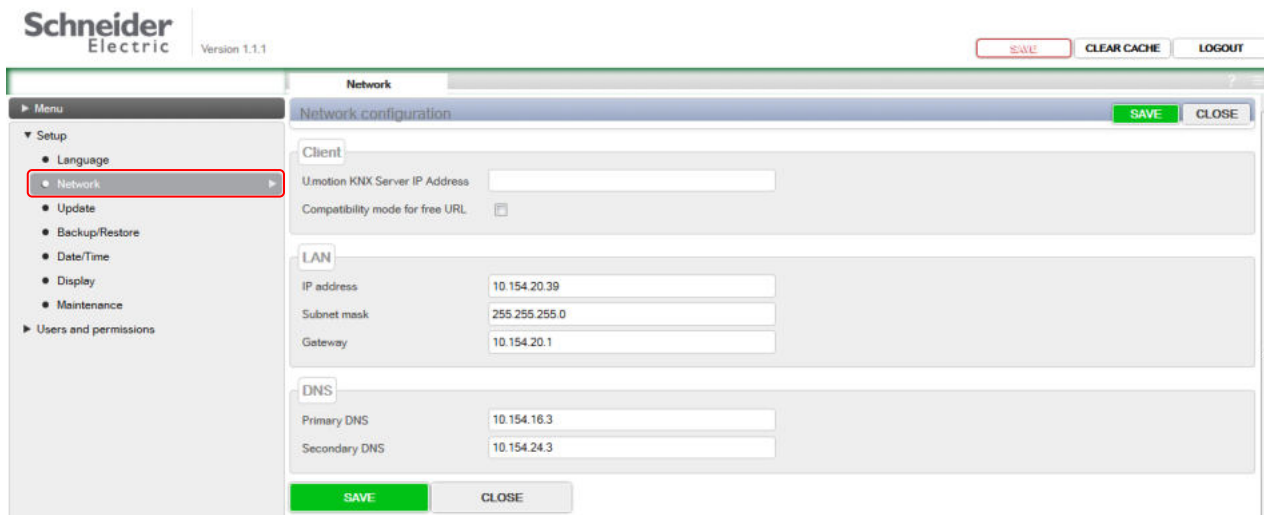
4.2 Setup of U.motion Touch Panel 10" and 15"

Configuration of U.motion consists of three steps:

- 1) Open Network menu
- 2) Configure network configuration
- 3) Reboot device

Step 1: Open Network menu

- a) Open your web browser
- b) Connect to device – fill IP address
- c) Login to configuration menu
- d) Click to **Setup**
- e) Click to **Network**



Step 2: Configure network configuration

- a) Write **U.motion KNX Server IP Address** in relevant format
 - Relevant format can be seen in chapter 3.2.1 in this Application note
 - Example : `http://admin:admin@10.154.20.81/cgi-bin/scada-vis/index.cgi`
- b) Click **SAVE** button under DNS setting table
- c) After automatic reload of page go back to **Network** menu item
- d) Tick **Compatibility mode for free URL** checkbox
- e) Wait approx 1 minute until Umotion touch panel get rebooted
- f) Click **SAVE** button on the top next to CLEAR CACHE

The screenshot displays the Schneider Electric network configuration web interface. At the top right, there are buttons for 'SAVE', 'CLEAR CACHE', and 'LOGOUT'. The 'SAVE' button is highlighted with a red box. The main content area is titled 'Network configuration' and contains three sections: 'Client', 'LAN', and 'DNS'. The 'Client' section is highlighted with a red box and contains the 'Umotion KNX Server IP Address' field with the value 'http://admin:admin@10.154.20.44/cgi-bin/scada-vis/ind' and a checked 'Compatibility mode for free URL' checkbox. The 'LAN' section contains fields for 'IP address' (10.154.20.39), 'Subnet mask' (255.255.255.0), and 'Gateway' (10.154.20.1). The 'DNS' section contains fields for 'Primary DNS' (10.154.16.3) and 'Secondary DNS' (10.154.24.3). At the bottom of the configuration area, there are 'SAVE' and 'CLOSE' buttons, with the 'SAVE' button highlighted by a red box.

Step 3: Reboot device

- a) Click to **Maintenance**
- b) Click to **REBOOT** next to Reboot system
- c) Wait until Umotion reboot

U.motion is now prepared for usage with spaceLYnk visualization.

4.3 Troubleshooting

1. **Sheet of paper icon** – This icon can be seen only in visualization created in spaceLYnk v1.1.0 or older. This issue may appear when you hold finger on one place. Please upgrade your spaceLYnk to v1.1.1 or higher, or modify Custom CSS by this code:



```
html, body, div, span, object, form, input, h1, h2, button, label, a, img {
```

```
-moz-user-select: none;
```

```
-webkit-user-select: none;
```

```
-webkit-user-drag: none;
```

```
}
```

```
input[type=text] {
```

```
-moz-user-select: text;
```

```
-webkit-user-select: text;
```

```
}
```

```
Custom CSS
1 html, body, div, span, object, form, input, h1, h2, button, label, a, img {
2 -moz-user-select: none;
3 -webkit-user-select: none;
4 -webkit-user-drag: none;
5 }
6
7 input[type=text] {
8 -moz-user-select: text;
9 -webkit-user-select: text;
10 }
```

2. **Inaccurate touch on icons** – If you meet with issue that you are not able to “touch” comfortably for first try on icons please execute calibration of screen. **Configuration menu – Setup – Display – Calibration.**

5 Video manual

U.motion Client Touch Panel 15"
MTN6260-0315



U.motion Client Touch Panel 10"
MTN6260-0310



6 Appendix

6.1 Glossary

The following table describes the acronyms and defines the specific terms used in this document.

| Abbreviation | Description |
|--------------|--------------------|
| SE | Schneider Electric |
| FW | Firmware |
| SW | Software |
| TP | Touch Panel |

Schneider Electric Industries SAS

Head Office

35, rue Joseph Monier

92506 Rueil-Malmaison Cedex

FRANCE

www.schneider-electric.com